

TechNote

Installing a Network Printer in Apple OS X

This TechNote describes how to connect to network printers in the Freeman Network. Network-accessible printers are located in the computer labs in Goldring/Woldenberg Hall 1 and in the Breakout Room suite located on the second floor of Goldring/Woldenberg Hall 2.

You will need your Freeman School Network ID and password to perform the steps described in this TechNote. See a Freeman School Information Technology staff member for help if you do not have your network login or if you have forgotten your password.

Your notebook computer should have a current, up-to-date virus protection program installed before connecting to the Freeman network. Information about virus and spyware protection software is available in the MTC computer labs and on the Freeman web site.

Shared printers connected to a Windows Print Server are configured via the hidden Advanced printer feature in the Print & Fax preferences. Follow the steps below to connect your specific printer

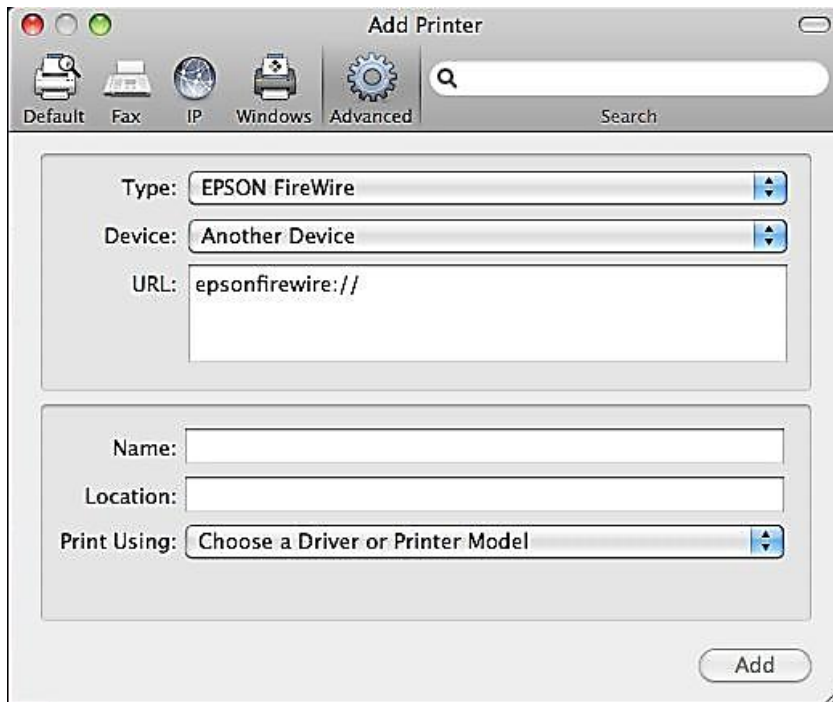


- Open Print & Fax in System Preferences



- Click + to add a new printer
- Control-click (or right-click) on the toolbar at the top of the window and select Customize Toolbar...
- Drag the Advanced icon to the toolbar and select Done

Click on the Advanced icon ... and be patient ... after a moment or two you can select LPR/LPD Host or Printer from the Type dropdown-menu

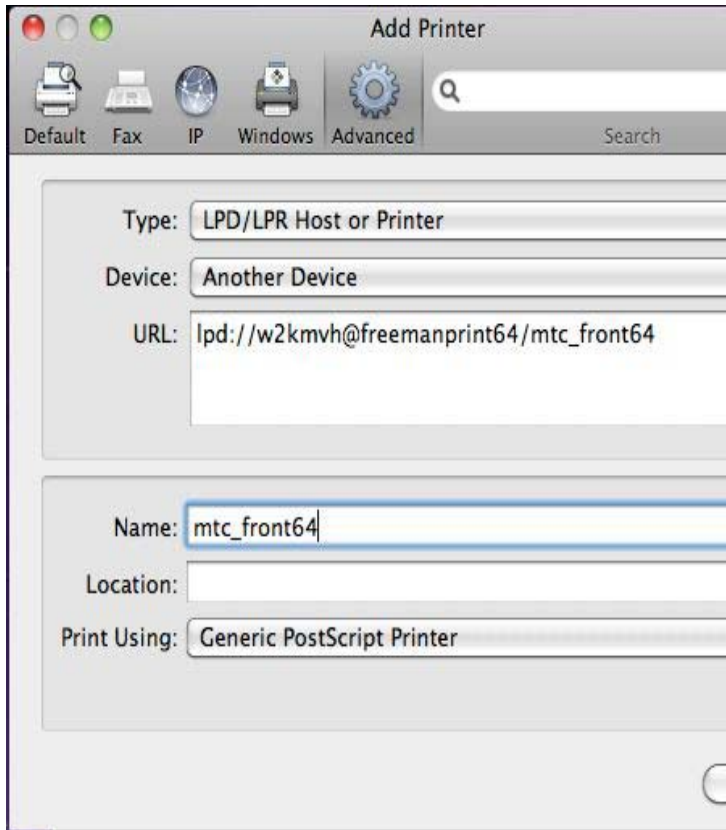


- Click on the Advanced icon
- select LPR/LPD Host or Printer

Enter the SAMBA URL of the shared windows printer in the URL textfield as follows:

lpd://USERNAME@IPADDRESS/PRINTERSHARENAME Fill out the other fields Name and Location as you prefer

When printing the first time you will get prompted for your USERNAME and PASSWORD. Fill in your windows Freeman School username and password and enable the “Add this to your keychain” checkbox.



- URL
- textfieldlpd://USERNAME@IPADDRESS/PRINTERSHARENAME
- Name: type in the printer name
- Location: type in the room number
- When prompted put in freeman\login name
- Password for account

Rev: tg 2012