

A. B. Freeman School of Business Houston Campus Mapping Network Drives

The Freeman Network contains many network drives which are used by students, staff, and faculty for a variety of purposes. This tech note outlines the purposes of various common drives and gives instructions for how to connect to them when logged into a computer on the Freeman network.

USEFUL INFORMATION

The fields below indicate information that you will need throughout this tech note. You may wish to write these down now for reference:

Freeman User Name _____
Freeman Password _____

FREEMAN NETWORK DRIVE SUMMARIES

Path: [\\freemanhouapp\username\\$](\\freemanhouapp\username$)

Commonly the H: Drive Letter

Note that username should be replaced with your Freeman User Name. The H: drive is your personal network drive. When you first log into you're account, some default folders are created. The most important of these is the profile folder. Do not modify this folder. Do not store movies or music on this drive. This drive is not 'world readable' (e.g. public) so your files are somewhat more secure. Keep in mind that due to network maintenance issues these files will sometimes be seen by MTC personnel.

Path: <\\freemanhouapp\apps>

Commonly the R: Drive Letter

This drive contains programs and files commonly required for use by A. B. Freeman School of Business classes. You will be instructed how and what to use in the individual classes that require the use of apps.

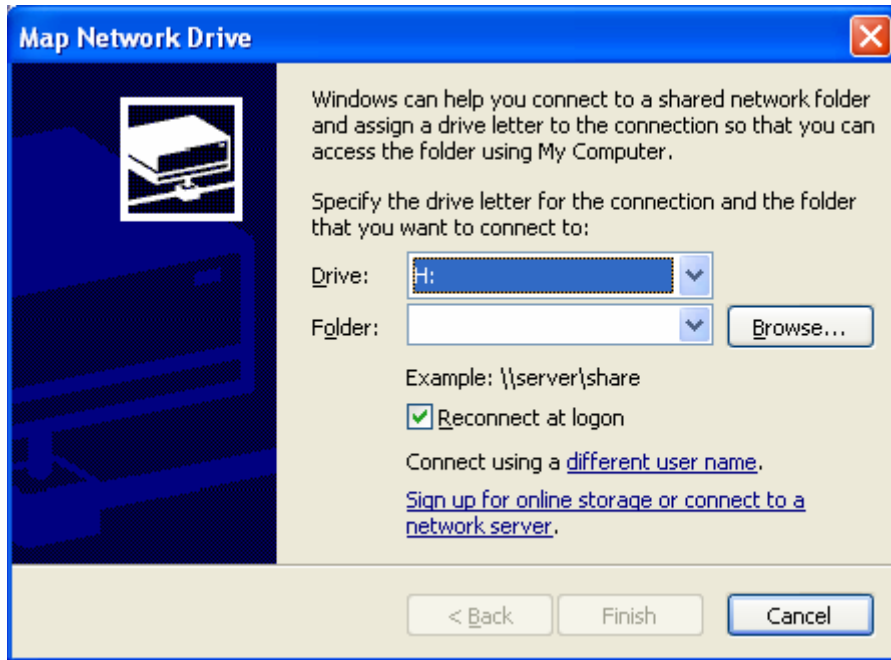
Path: <\\freemanhouapp\studentshare>

Commonly the S: Drive Letter

The studentshare drive is a common 'public' file storage area, often used for sharing group projects files. Keep in mind that any files stored here can be seen and modified by anyone with access to the Freeman network.

FREEMAN NETWORK DRIVE MAPPING

Open My Computer window. On the tool bar at the top of the window, select Tools and then select Map Network Drive. This will open a widow titled Map Network Drive as seen below.



Select the appropriate Drive Letter as referenced above from the pull down menu.

In the Folder field, enter the Path as referenced above.

Make sure the Reconnect at logon box is checked.

Select Connect using a different user name.

A new window will appear titled, Connect As...

In the User name field type: freeman\yourusername

In the Password field type: yourfreemanpassword

Select the Ok button, then select the Finish button.

The network drive will now appear in the My Computer window under the Network Drives section.