

# Apple OS-X Wireless Setup

Identifying the Apple Airport MAC Address

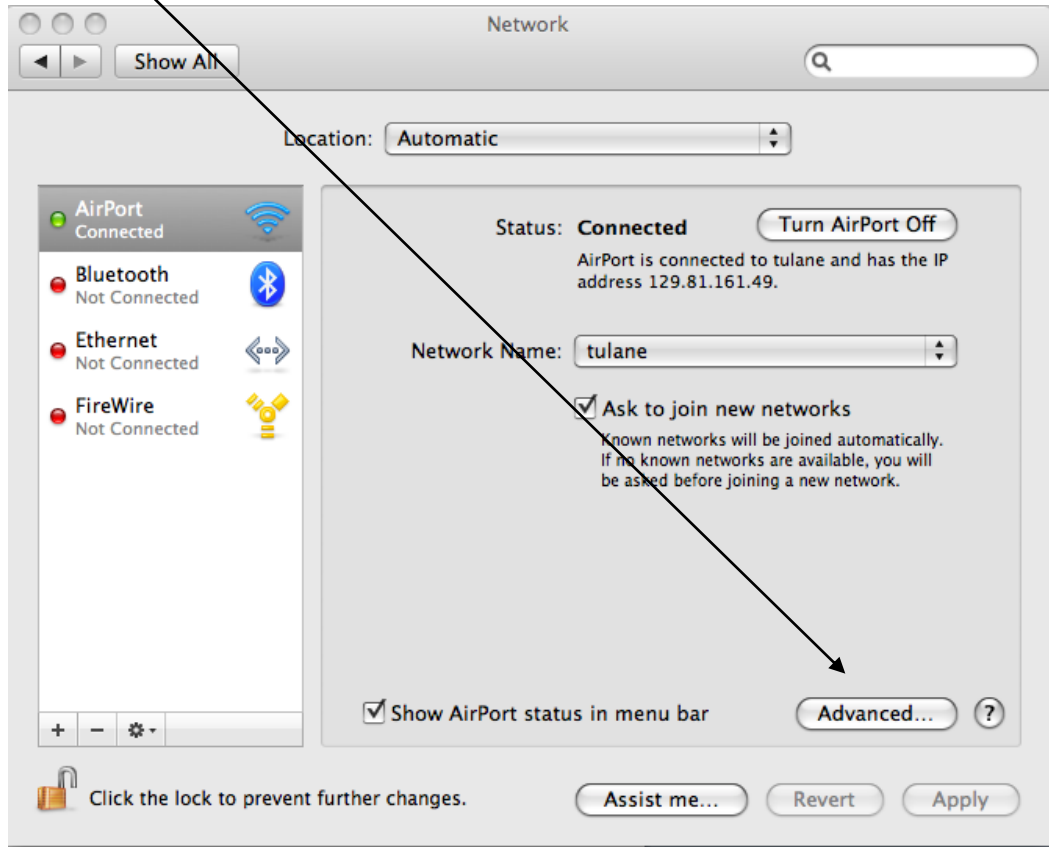
1. Select the **System Preferences** control panel in your **dock**. If it is not there, go to the **Apple Menu** and select **System Preferences**.



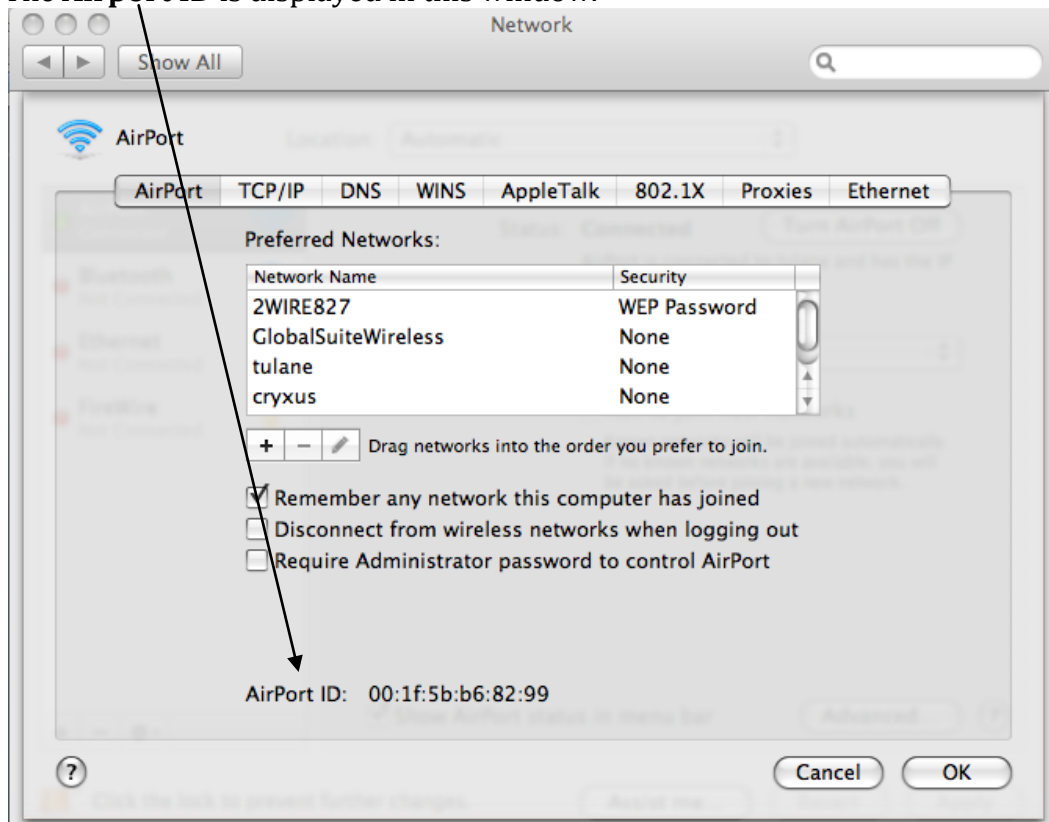
2. Select the **Network** control panel.



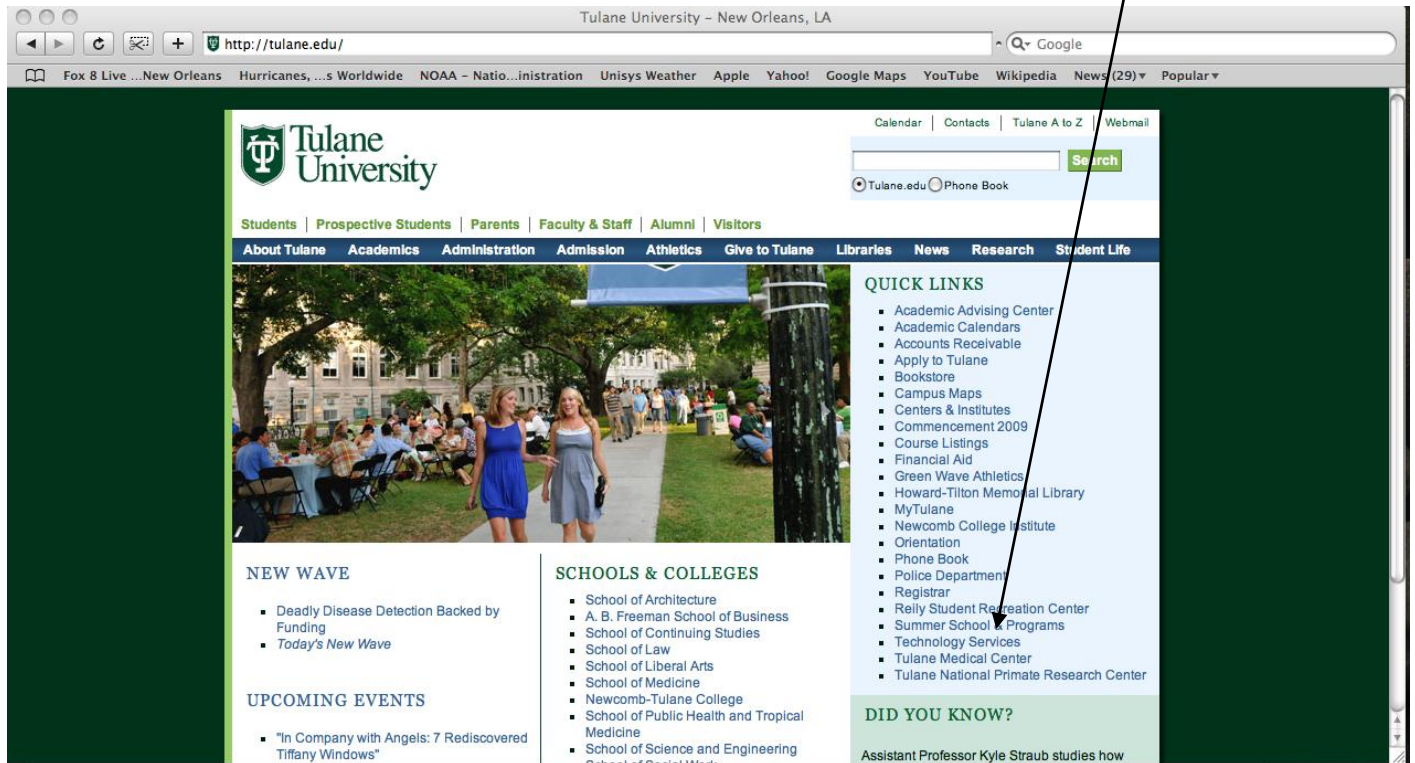
3. Select **Advanced**.



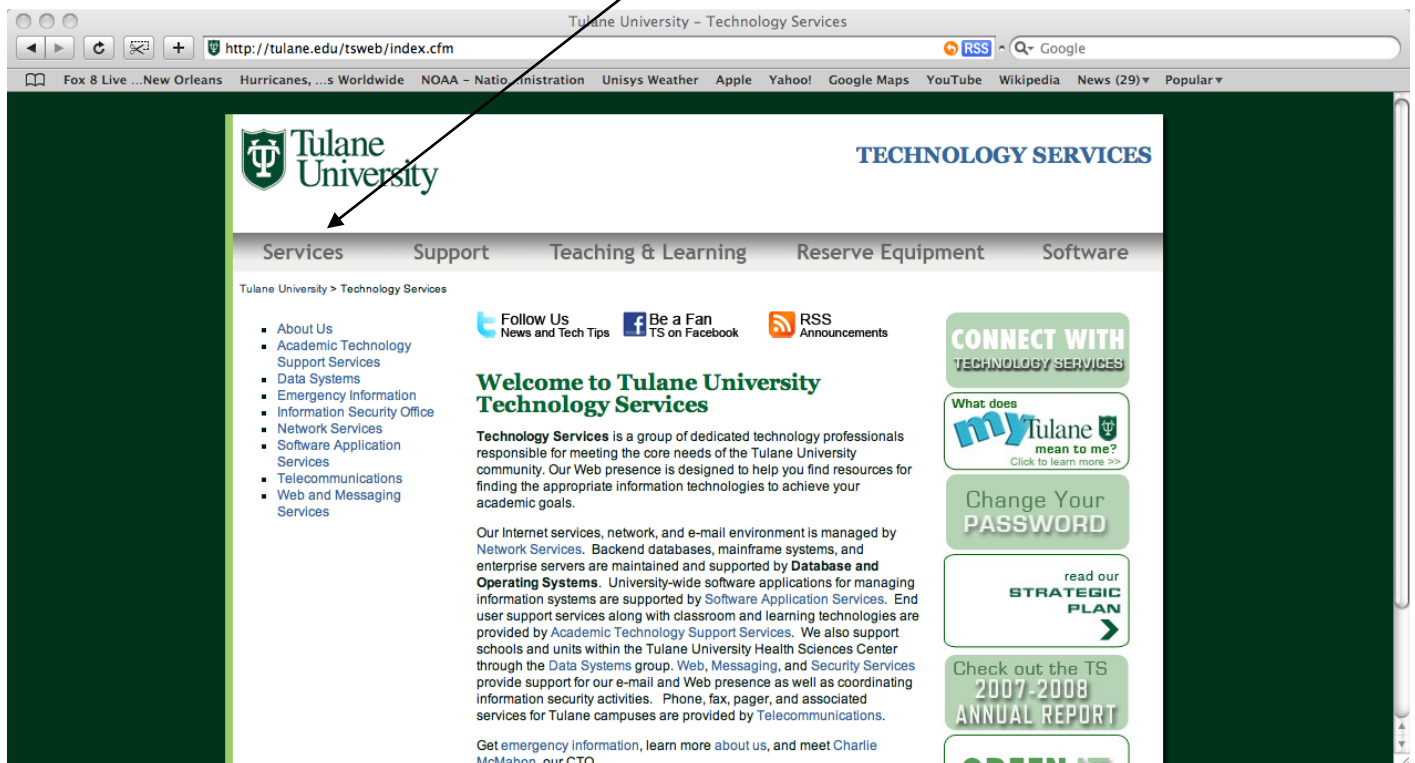
4. The **Airport ID** is displayed in this window.



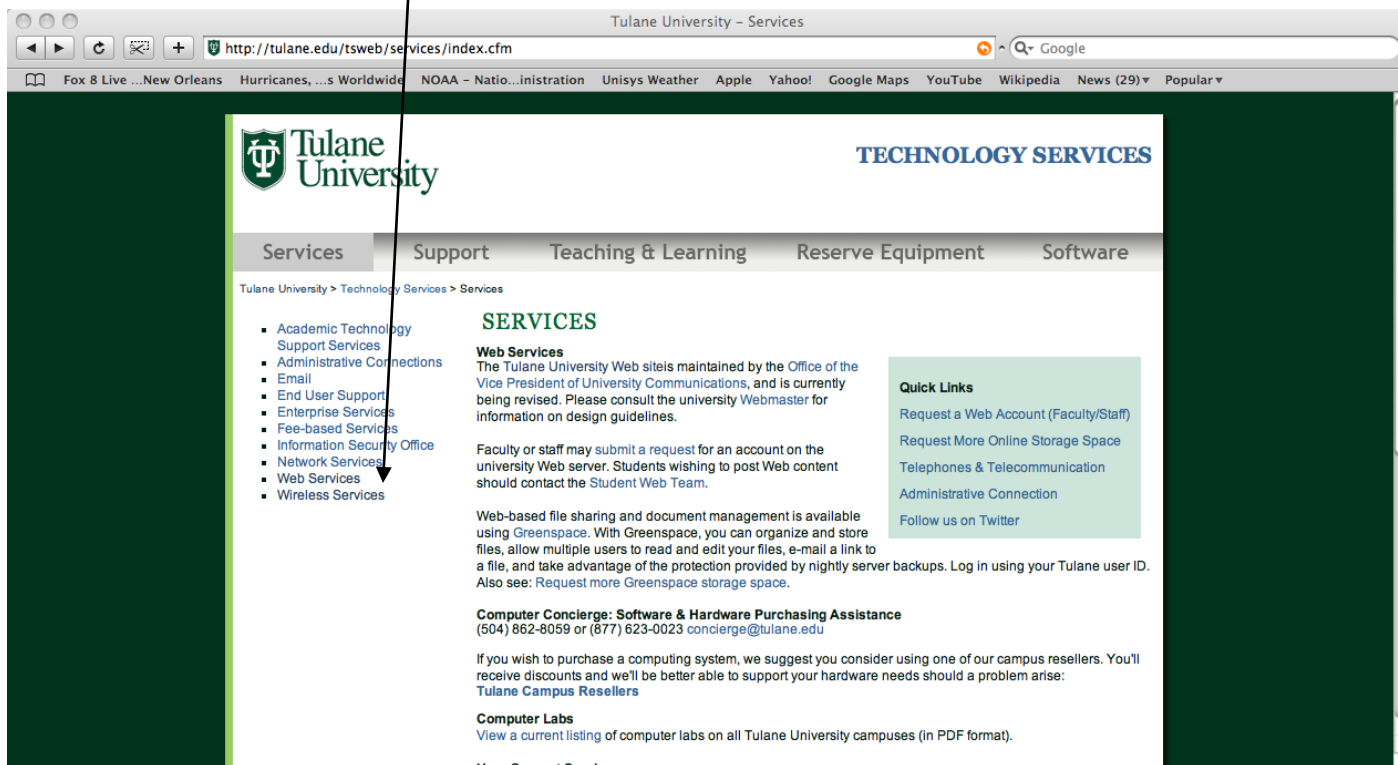
5. Plug an ethernet cord into your computer to connect to the internet. Open your web browser to the Tulane web page. In the lower right hand corner, find the **Technology Services** link and click on it.



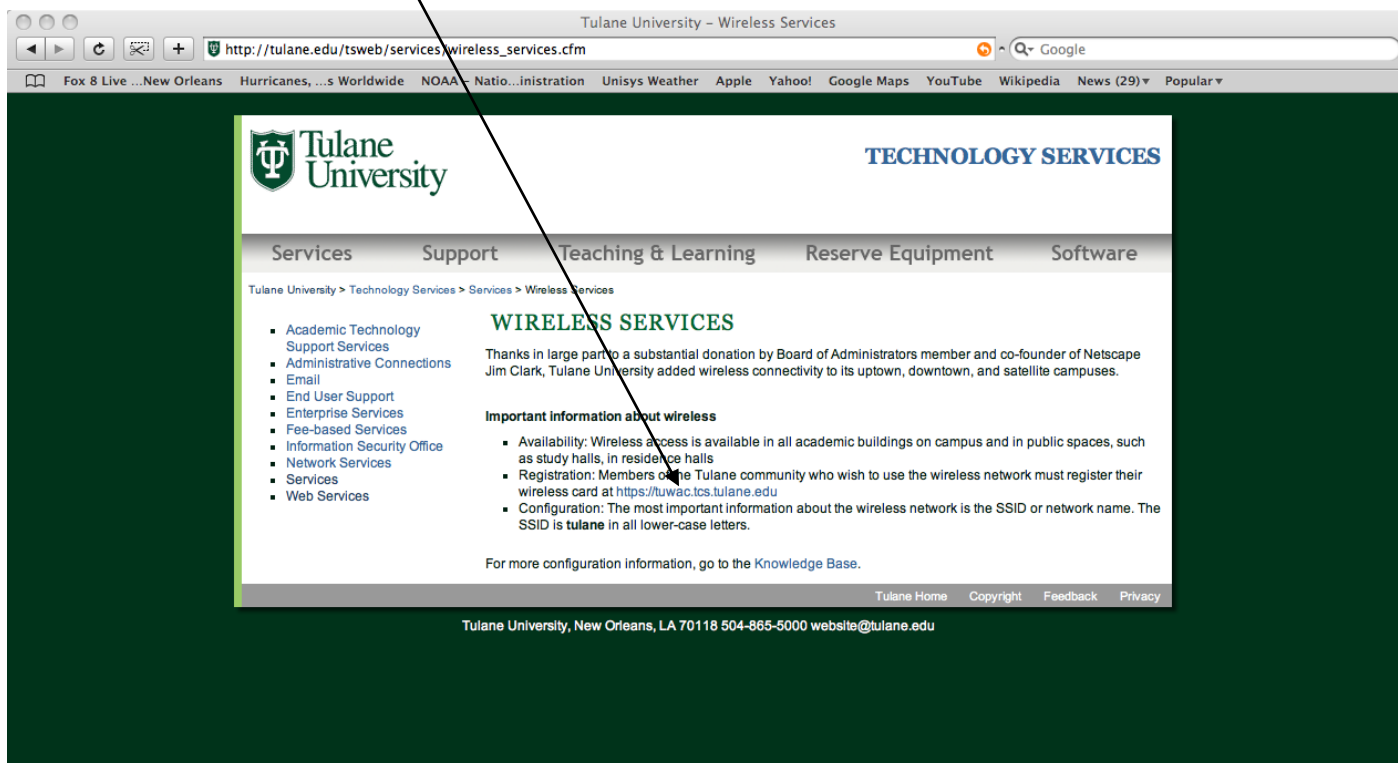
6. On the following web page select the **Services** tab on the top of the screen.



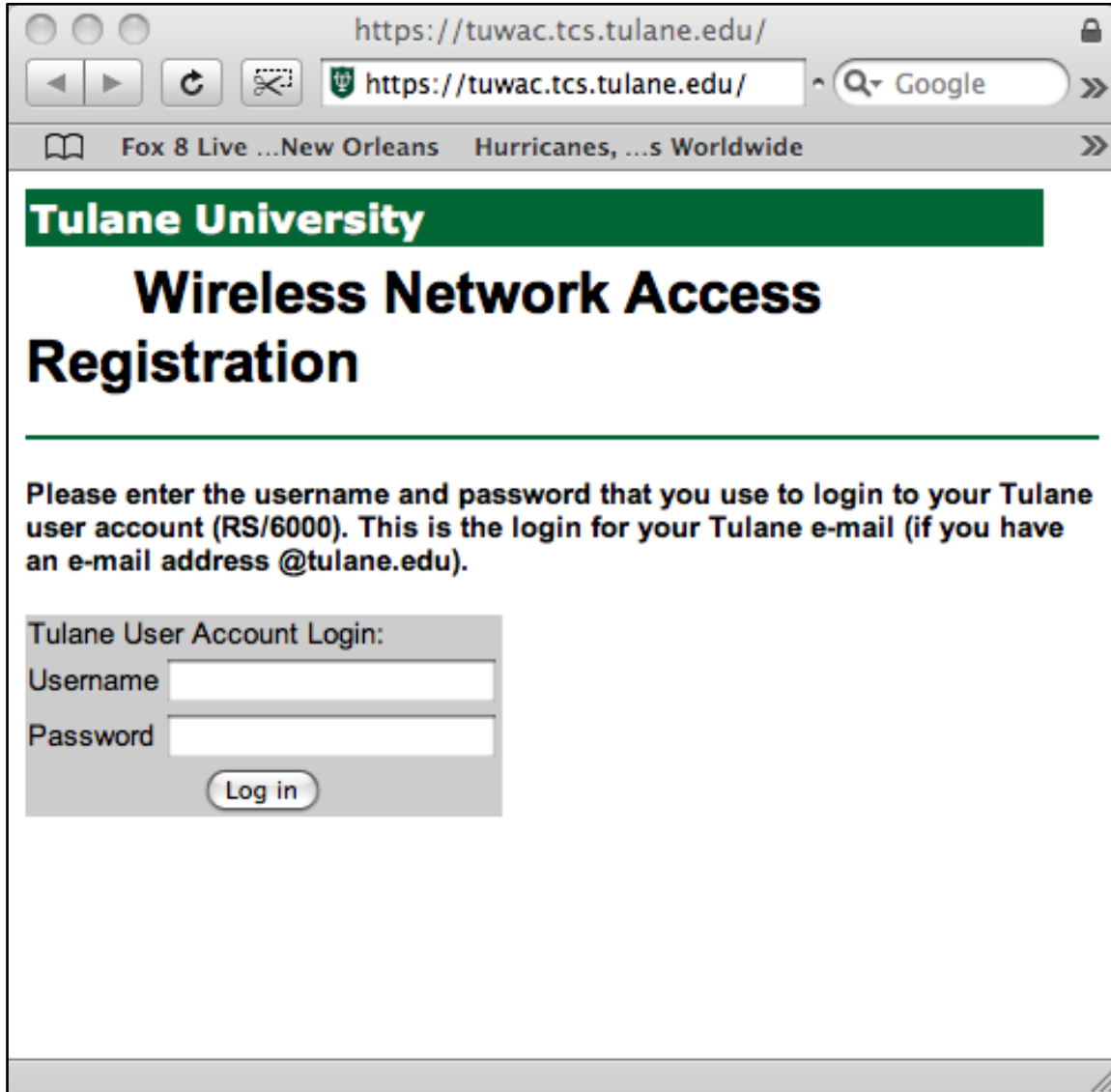
7. Select the **Wireless Services** link on the left side of the web page.



8. Select the <https://tuwac.tcs.tulane.edu> link.



9. Type in your Tulane login name and password (same as for your Tulane e-mail)



The screenshot shows a web browser window with the URL <https://tuwac.tcs.tulane.edu/>. The page features a green header with the text "Tulane University" and a main heading "Wireless Network Access Registration". Below the heading, there is a paragraph of instructions: "Please enter the username and password that you use to login to your Tulane user account (RS/6000). This is the login for your Tulane e-mail (if you have an e-mail address @tulane.edu).". A form titled "Tulane User Account Login:" contains two input fields: "Username" and "Password", followed by a "Log in" button.

10. The next screen requires you to type in your first name, last name, and the number (physical address) you found in Step 4. After you select the register button on the web page it should take 15 minutes to complete the registration process. If it takes longer than 15 minutes, please call the Tulane Help Desk (504-862-8888 off campus, or 8888 on campus) to resolve the problem.